

2022

Year reporting 2021

ANNUAL REPORT



**KIAMICHI
ELECTRIC**
COOPERATIVE





VALUES

SERVICE

We take care of our members, our community, and each other.

INNOVATION

We relentlessly seek to move our cooperative and industry forward.

SAFETY

We are adamant about our commitment to safety.

TRUST

We build trust through honest and consistent communication.

MISSION

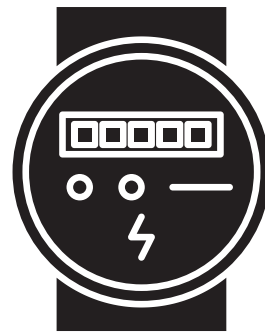
To make electric energy available to all members of the cooperative at the lowest cost, consistent with sound economy and good management.



17,070
Total number of KEC
members served



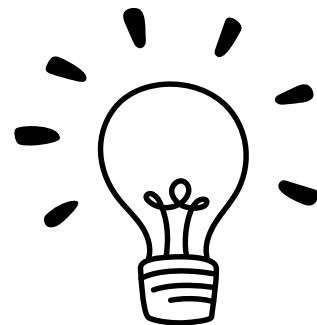
29,706
active meters



\$149.77
Average KEC
residential bill



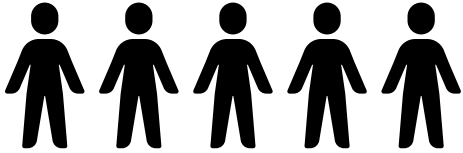
1,170 kWh
Average KEC residential
use per month



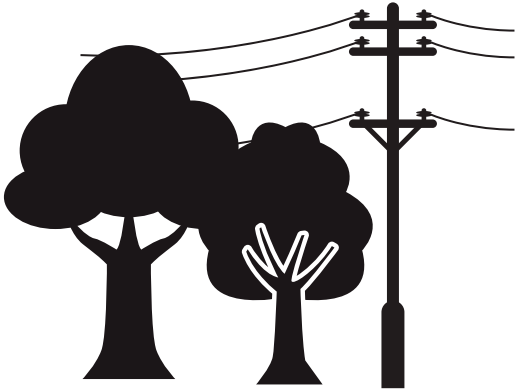
4,231
Total miles of line



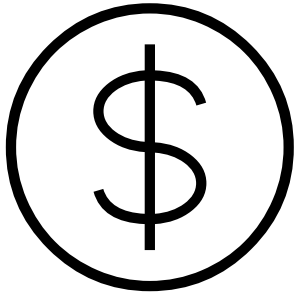
Average of
5 members per
mile of line



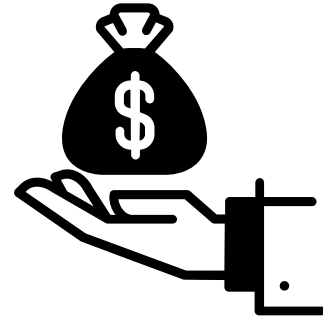
508 miles of line cleared
by the ROW Crew



\$44.9M
Revenue



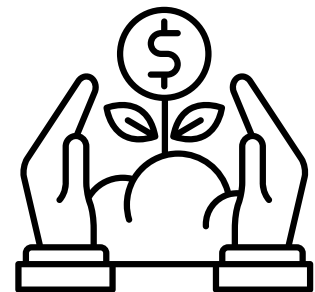
KEC returned
\$603,780.26
in margins from 2002



KEC is 5 years ahead
of capital credit
refund schedule



Since 1945, KEC has
returned over \$16.3M
in capital credits



How your dollar was spent in 2021



Board of Directors



Ron Pelaconi, District 3
President



Rusty Shaw, District 1
Vice President



Amy Miller, District 2
Treasurer



David Ray, District 4



Don Parr, District 5



Mark Ichord, District 6



Larry Culwell, District 7



**KIAMICHI
ELECTRIC**
COOPERATIVE

Powering your home since 1945



www.kiamichielectric.org